



HILTON HOUSE

71-73 CHAPEL STREET



Description

Hilton House is ideal for those businesses looking to transition out of the co-working environments, where business growth can be somewhat cost prohibitive. Our offices give occupiers the benefits of the upmarket feel as well as the exclusivity of having your own area and separate suite.

The work spaces range from 500 to 1000sqft and all benefit from added facilities including modern WCs, a bright kitchen and showers for those who exercise or cycle to work.

The building consists of three floors, with the rooms at the front of the building boasting great views of the Trinity Church Gardens.



Traditional with a modern twist

Our Manchester premises has recently undergone major refurbishment works, making it the ideal working environment to work in as well as bring clients to.

We understand in the modern business world that impressions count. Hilton House reflects the high standards of any business operator with wood panelled walls, LED lighting and Cat 5 cabling.





Location

Hilton House is located on the corner of Blackfriars and Chapel Street, Manchester. Both streets are arterial routes into and out of the city centre.

The building is a stone's throw from Deansgate, central to one of the main leisure and retail areas in the heart of Manchester, with nearby occupiers such as Cafe Nero, Pret A Manger, House of Fraser to name but a few.

It is equidistant between both Piccadilly train station and Salford Central, therefore situated ideally for commuters.

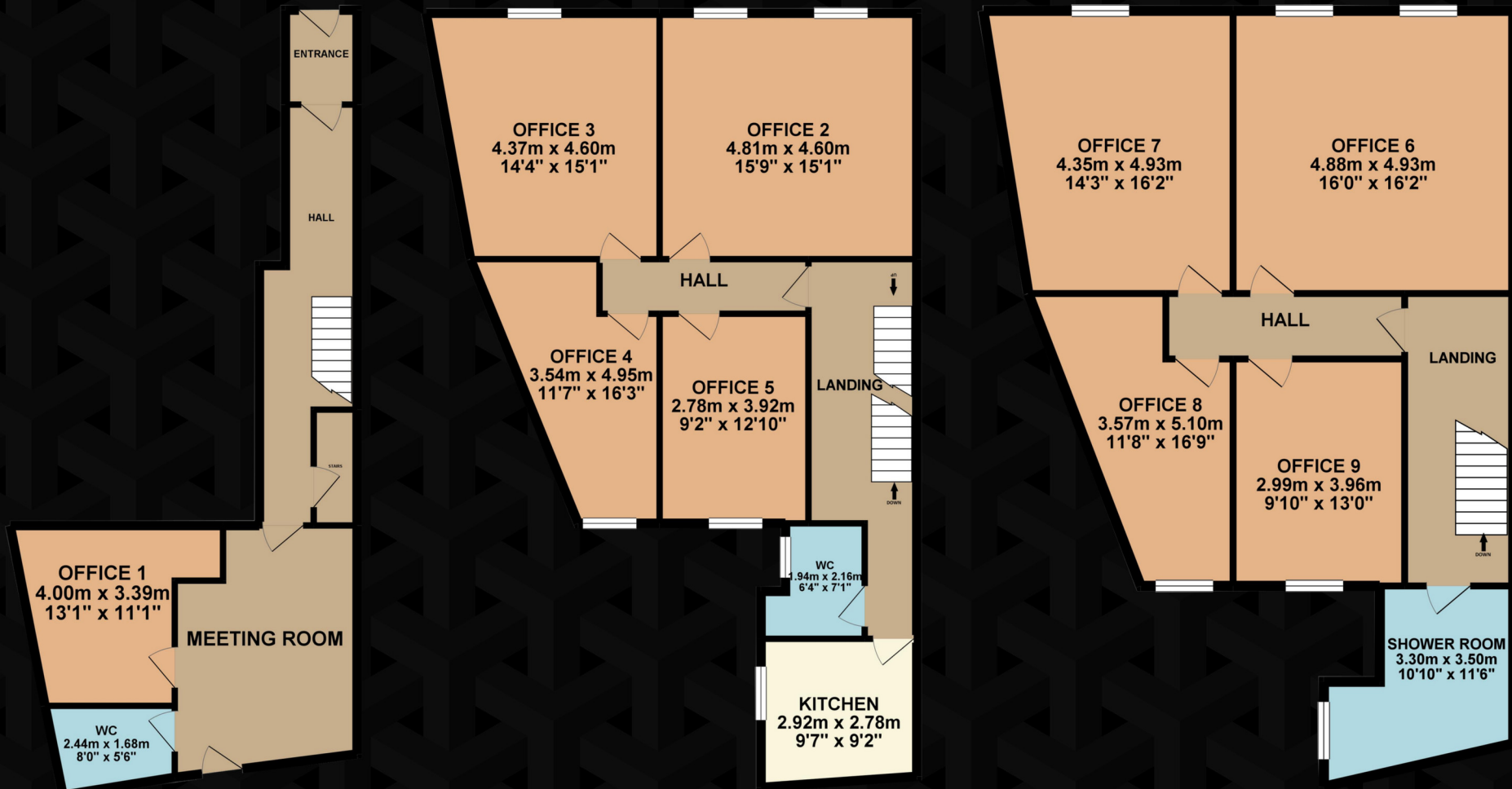
The offices also benefit from being in such close proximity to a variety of Manchester's premier hotels; the Lowry, City Suites and the Renaissance all within a 5 minute walk.

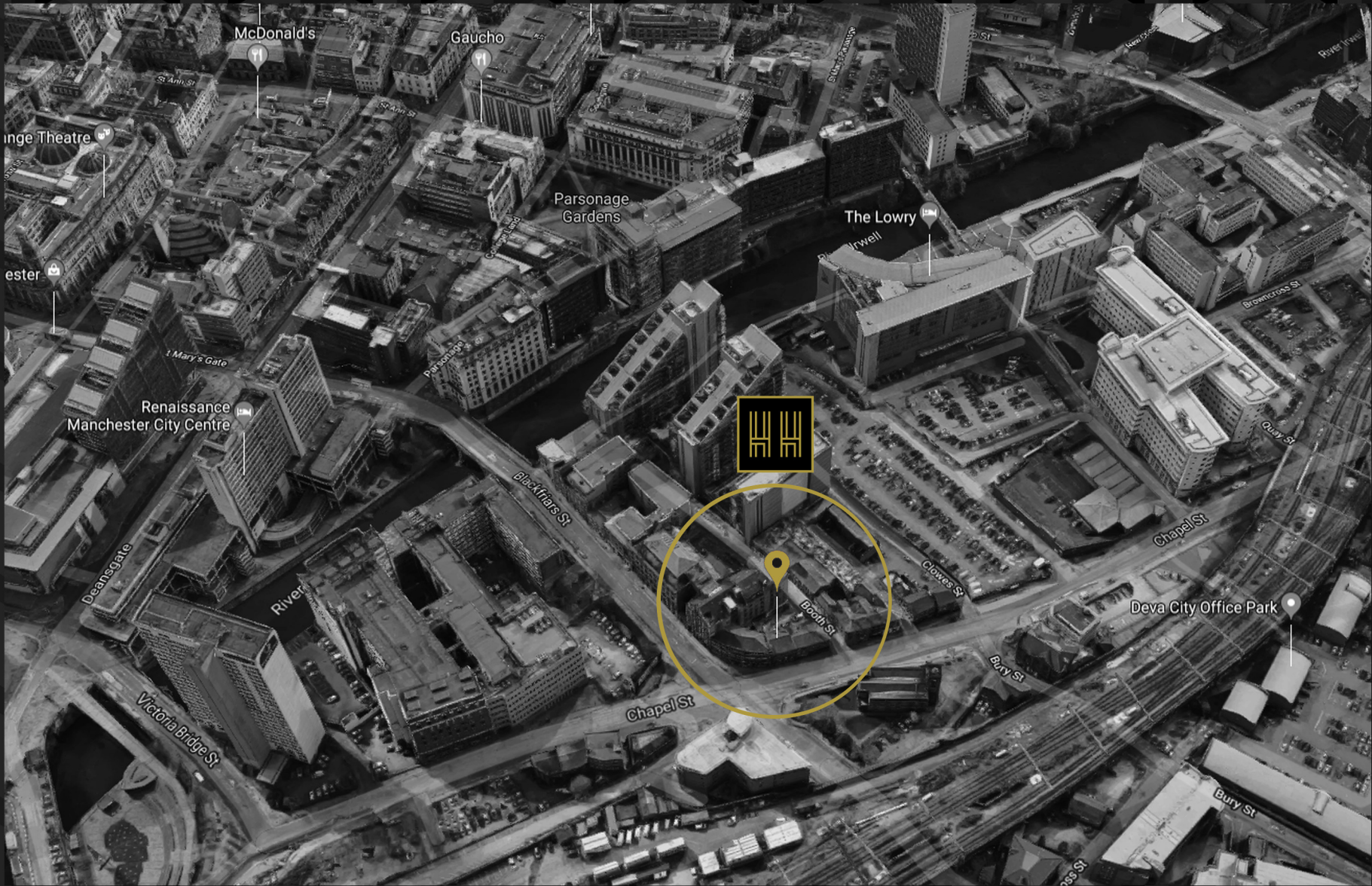


GROUND FLOOR 43.71 sq. m.
(470.48 sq. ft.)

1ST FLOOR 90.17 sq. m.
(970.55 sq. ft.)

2ND FLOOR 90.37 sq. m.
(972.72 sq. ft.)





Contact Us



J Aspinall
+44(0)1204 534 224
info@studiocircle.co.uk



JRNIMAN & CO
BOLTON

R Niman
+44(0)1204 534 224
info@studiocircle.co.uk